



OXFORD CLASSIC WAINSCOT
BEADBOARD & PANEL SYSTEMS

CUSTOM PANELED WAINSCOTING

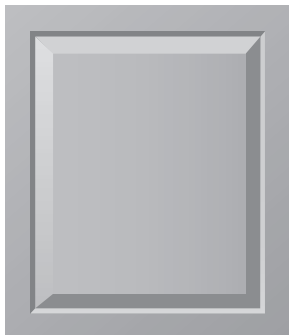
Our Semi-Custom Wainscoting is delivered to you:

- Fully Assembled
- Built to your room dimensions
- Comes standard at 36" tall
- Has equal size panels for individual wall
- Is constructed with individual styles & rails and floating panels

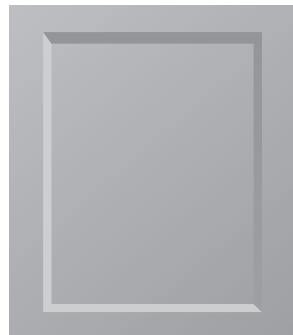
WAINSCOT SYSTEMS

Product Options Include:

PANEL TYPE:

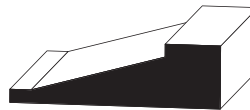


Raised Panel



Recessed Panel

PANEL PROFILE:



Classic Raised



Ogee

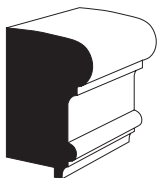
STILE & RAIL PROFILE:



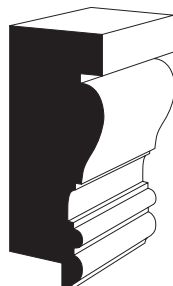
Standard

Additional Product Options *(sold separately):*

CAP OPTIONS:



AB310

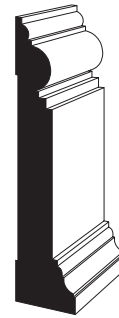


AB311

BASE OPTIONS:



AB110



AB212



AB219



OXFORD CLASSIC WAINSCOT
BEADBOARD & PANEL SYSTEMS



CUSTOM PANELED WAINSCOTING

Frequently Asked Questions

- 1 How long does it take to receive my wainscoting?**
Your order from processing will take 3-5 weeks.
- 2 What is the longest piece of wainscoting you will ship me?**
Your wainscoting will be built and assembled to your measurements, up to 8 feet long. For walls over 8 feet, the wainscoting will be shipped in segments and joined together by you, with blind screws from the back. But don't worry, you will never see the joints.
- 3 What if a piece of wainscoting comes in the wrong length?**
You must take the measurements very carefully! Double check the measurements before sending the order. We double check ours before sending them out.
- 4 Do you offer other sizes?**
No, we have found that 36" is a classic height for wainscoting, if you want it taller, try lifting it off the floor using a taller baseboard moulding!
- 5 Is it hard to install this wainscoting?**
No, any professional can install this, and certainly it is a great project for the weekend DIY professional.
- 6 What do we do about outlets in the wall?**
They can be cut into the wainscoting providing they fall in a panel. If they don't, you will need to have a licensed electrician move the outlets. We never want to alter a panel size to accommodate an outlet!
- 7 What do we do about air vents in the wall?**
They can be cut into the wainscoting providing they fall in a panel. If they don't, you will need to have a licensed H.V.A.C. contractor move the vents. Most times it is moved down toward the floor and a register is built into the base trim.
- 8 Who do we send the order form to?**
Contact your local A&B Wood Design dealer and fax it to them.



CUSTOM paneled WAINSCOTING

How to Order



OXFORD CLASSIC WAINSCOT
BEADBOARD & PANEL SYSTEMS

WAINSCOT SYSTEMS

1. Draw basic room layout (see Figure 1)
2. Label each wall (ie; A, B, C)
3. Document each wall dimension
4. Draw your window walls (Figure 2). Include dimensions as shown
5. For stairwells, draw the wainscoting, (Figure 3) include the dimensions as shown
***these dimensions are standard**
6. Give us the angle measurements as shown (Figure 4)
 - ◆ Draw a "Plumb Line" up 24"
 - ◆ At the 24" mark, draw a "Level Line" back to the stringer
 - ◆ Take your time, these are critical measurements

Figure 1

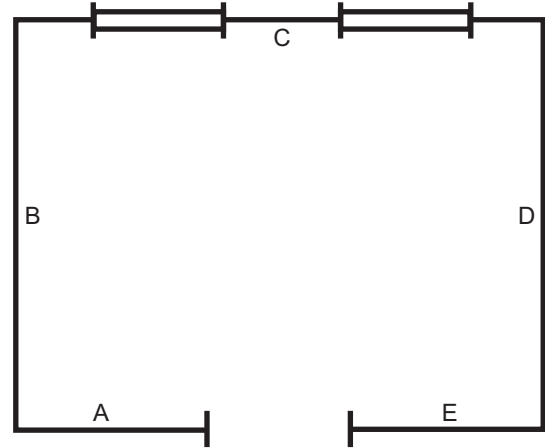


Figure 2

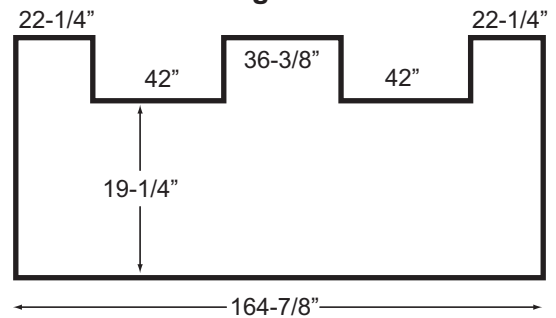


Figure 4

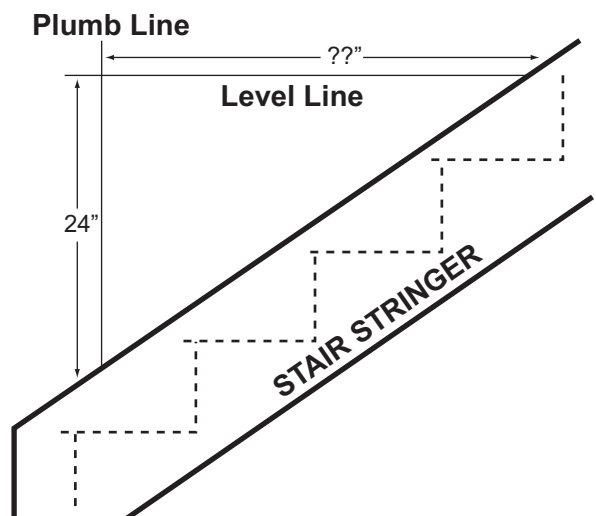


Figure 3

